



Habitat Restorations Aotearoa Ltd.

glen@habitatrestorations.nz

027 424 0224

www.habitatrestorations.nz

Waioira Manuherekia

Planting proposal for Gillespies

Please find below suggested plant species, planting densities, and site preparation for the wetland. These suggestions have considered the approximate budget for planting allocated and recommendations provide the best outcomes for the budgets.

It is understood that curved electric fencing will be installed 3-4m off the stream to enable riparian planting of the stream to occur, including planting around the existing pond (Figure 14, Figure 15 and Figure 16). The property owner has requested some taller species to be included, such as mountain beech and tōtara. Planting should be located 1.5m off the fence. It is recommended that planting is at 2m spacings.

Budget: \$27,000

Total plant numbers: approximately 1,200 plants.

Recommended planting list:

- *Austroderia richardii* (toetoe)
- *Carex secta* (pukio/sedge)
- *Carex virgata* (pukio/sedge)
- *Coprosma propinqua* (mingimingi)
- *Cordyline australis* (tī kōuka/cabbage tree)
- *Fuscospora cliffortioides* (mountain beech)
- *Olearia avicenniifolia* (mountain akeake)
- *Olearia lineata* (small-leaved tree daisy)
- *Olearia nummulariifolia* (tree daisy)
- *Olearia odorata* (scented tree daisy)
- *Phormium tenax* (harakeke/flax)
- *Podocarpus laetus* (Hall's tōtara)
- *Podocarpus totara* (tōtara)
- *Sophora microphylla* (kōwhai)
- *Veronica salicifolia* (koromiko/hebe)

Site preparation and planting:

Site preparation will not require pre-spraying. It is recommended that the area is prepared with the mulcher and then planted. The area could be lightly grazed prior to planting after the fence has been installed has an alternative option. Plant guards and bamboo sticks are

Waioira Manuherekia

Planting proposal

recommended, as is weed releasing at the time of planting for efficiency of maintenance.

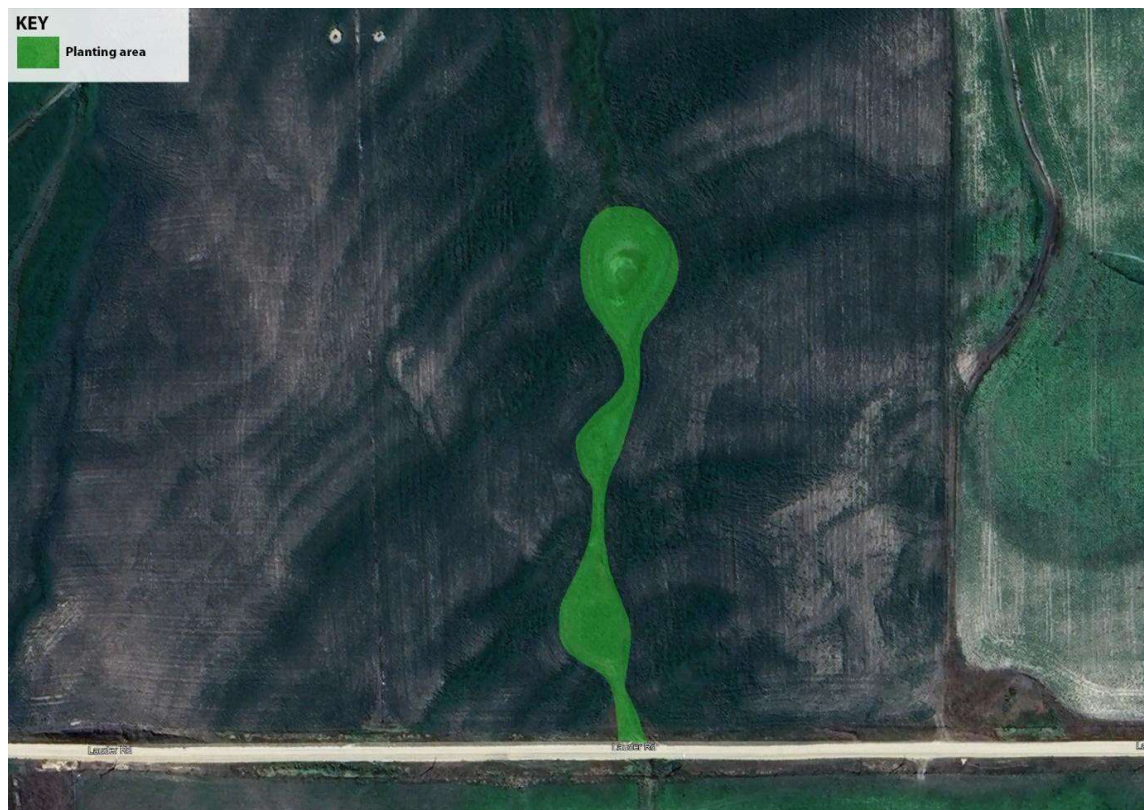


Figure 14 Plan view of the planting area.



Figure 15 Photograph of the stream, looking north.



Figure 16 Photograph of the pond area.